

If you would like to find out more please contact us via the school office on 01289 388268 or email admin@lowick.northumberland.sch.uk

We offer you a warm welcome and would love to hear from you and show you round.

We currently run a free **Stay and Play** session every **Thursday 1:30-3:00.**

To find out more please join our Facebook page at **Lowick and Holy Island Nursery.**

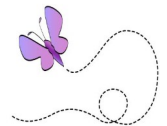
"be encouraged in heart and united in love"



Lowick and Holy Island Nursery

Welcome Booklet

Journeying Together



Lowick CE First School
30 Main Street
Lowick
Northumberland
TD15 2UA
01289 388268

admin@lowick.northumberland.sch.uk
www.lowickholysislandschools.org.uk



Have a look on our friendly facebook page:
Lowick and Holy Island Nursery

Keeping parents informed

We currently use the online learning journal Tapestry which builds a special record of your child's experiences, development, and learning journey. We do this through photos and videos which will be uploaded by us, we also ask you to add special occasions, new learning experiences or even just a Sunday afternoon walk. This helps us 'weave' the story of the child and how they are growing and developing.

All information held in the platform is stored securely, the Tapestry online learning journal is also available as an easy-to-use, secure app, meaning capturing key learning moments, and videoing milestones are even easier.

Partnership with parents is also very important to us at this young age, which is why we offer weekly updates on your children's latest activities and achievements on the Tapestry Online Journal and regular parent's evenings.

For parents of our two year olds, we also send home a nursery diary to provide you with information about your child's personal care (nappies/ toileting/ food/ sleep etc.).



Provision for 2 year olds

In winter 2018 we were thrilled to be able to open our doors to two year olds, and have enjoyed seeing them play, learn and grow all the way up to Reception.

As we are aware of the different level of development to that of 3 and 4 year olds, we made some changes to our nursery and are able to offer parents peace of mind that their 2 year old's physical, emotional and cognitive needs will be met.

We have a purpose built nappy change area and sleep area, plenty of open space and opportunity for sensory and physical development. We also provide a more relaxed routine which is primarily child led, offering increased visual aids such as pictures, signs and simple Makaton in order to encourage children to be independent learners.



Hello!

Welcome to Lowick and
Holy Island Nursery



Our nursery is part of Lowick and Holy Island C of E First schools and we are situated on the Lowick First school site. We currently offer provision for 2 to 4 year olds, including fee paying and funded children.

We aim to provide an attractive, stimulating and caring learning environment which will nurture the development and potential of every child in our care - enabling them to become effective independent learners.

The nursery has a large classroom with toilets and changing unit for the younger children. We have our own outdoor area which we enjoy every day. We also have the benefit of using the school's large field and fairy garden.

As we are a school nursery; we join the school aged children at break times and for our lunch. Sometimes we also have reception to join us. The best bit is joining them on school trips.

OFSTED

Our most recent report commented on the high standards at Lowick and Holy Island Nursery. In the early years **"children are able to be curious, manage risks, investigate and explore because the planning, activities and resources enable them to do so in a safe yet stimulating environment"**.

In particular, Early Years provision provides **"a wide range of stimulating and challenging learning opportunities which match the interests and needs of the pupils."**

Meet the Team

Nursery Teacher

Hello everyone, my name is Miss Adams and I cannot wait to welcome you into our wonderful nursery.

I live in Seahouses with my partner Ross and our two children James and Ella. We love spending time with our family and exploring the local beaches with our dog Blue.

I have worked in education for over ten years in a nursery and as a TA, but I knew my dream was to become a teacher specialising in Early Years. So, I attended Northumbria University to study an Early Primary Education Degree and I successfully qualified in July 2018.

I have been the nursery teacher at Lowick since September 2018 where we take pride in providing a safe and exciting environment for your child to learn and grow.

Hope to see you soon!

Miss Adams

Feel free to contact me at:
Kayleigh.adams@lowick.northumberland.sch.uk



Your child will be supported through their learning by Miss Adams and Miss Easten who are responsible for observing them and tracking their progress through the *Early Years Foundation Stage*, the Early Years Foundation Stage (EYFS) is based on seven areas of learning.

The Three Prime Areas:

Communication and language

Physical development

Personal, social and emotional development

The Specific Areas:

Literacy

Mathematics

Understanding the World

Expressive arts and design



Our Curriculum

We pride ourselves on offering a diverse, enriching and stimulating environment for your child to grow and learn. We are here to help your child develop and thrive at their own pace, encourage them to try new experiences and build positive relationships.

We offer a wide variety of resources and experiences through child-initiated learning and adult-led activities. The children can access the resources independently as we encourage them to make links between their play and the wider community which encourages imagination and creativity.

We will also support their learning by providing experiences surrounding their interests and build upon ideas they present through their play, using in the moment planning to help guide their theories and plans.



Nursery Teaching Assistant

Hi everyone, my name is Miss Easten and I am really looking forward to meeting you. A few years ago, I moved from Newcastle to Berwick and I love the countryside and beaches here! I especially like seeing all the farm animals in the fields and my rabbits have lots of space to play in the garden.

I started working in nurseries and tutoring 8 years ago, then I went to study Early Years and Childhood Studies at Northumbria University. I graduated with a first-class degree and then worked in a private nursery for a few years.

Now I work here at Lowick Nursery where I love working with 2- 4 year olds to build their confidence and watch them grow as we learn together.

Hope to see you soon!

Miss Easten

You can contact me at:

Amelia.easten@lowick.northumberland.sch.uk

Nursery Sessions

8:00 – 8:45	Morning club
8:45 – 12:00	Morning Session
12:00 – 1:00	Lunch
1:00 – 2:45	Afternoon session
2:45 – 5:00	After School Club

The nursery is open during term time, Monday to Friday.

Above are our current nursery session times. As we are a small nursery, we pride ourselves on being flexible, so please get in contact if you require anything different.

For fee paying children we charge £4 per hour.

Children can bring in a packed lunch or we offer a school dinner (a hot meal or grab and go packed lunch style) for £2.50.

Our nursery children are not required to wear a school jumper and polo shirt, but some like to wear it (please contact the school for a uniform order sheet).

Funding

15/30 hours for 3 year olds

All children are eligible for 15 hours of funding the term following their third birthday. Please note that the nursery will automatically claim the grant on your behalf unless you specifically ask us not to.

Some children will be eligible for the 30 hours funding the term after their third birthday and there may also be some 2 year olds who qualify for 15 hours.

Please use the following link to check eligibility:

www.childcarechoices.gov.uk



How the 30 Hour Grant Works

- If your child's birthday falls between the 1st April and the 31st of August, the grant will be available from September (Autumn Term)
- If their birthday falls between 1st September and the 31st December, the grant is available from January (Spring Term)
- If their birthday falls between 1st January and the 31st March, the grant will be available from April (Summer Term)

Each term you will be asked to confirm the number of hours your child is claiming on the grant; your signature is required at the time.